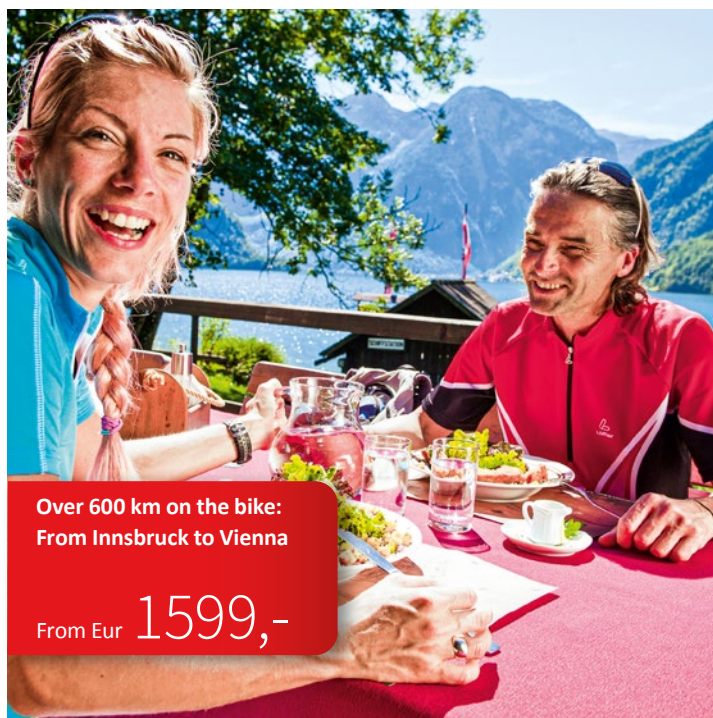


The great cycling holiday in Austria

13 DAYS / 12 NIGHTS, APPROX. 610 – 630 KM
BOOKING CODE: OE-IW12

DAILY ROUTE LENGTH ●●●●●
TOPOGRAPHY ●●●●●



Your tour

Inn, Tauern and Danube cycle paths – the great cycling holiday in Austria keeps its promise! You cycle along the most beautiful sections of the popular long-distance cycle routes, visit the Zillertal and Austria's highest waterfall in Krimml. With a view of the peaks of the surrounding mountains, you cycle through the Hohe Tauern National Park and extensive valleys to Salzburg. Leaving the city of Mozart behind, the longest castle complex in the world awaits you in Burghausen – impressive! On the way to your destination Vienna, you will have plenty of time to taste the delicious wines of the Wachau. Cheers!

Itinerary

Day 1	Individual arrival in Innsbruck
Day 2	Innsbruck – Strass / Zillertal, approx. 50 km
Day 3	Strass – Krimml, approx. 25 – 45 km + transfer
Day 4	Krimml – Kaprun / Zell am See, approx. 60 km
Day 5	Zell am See – Lofer, approx. 50 km
Day 6	Lofer – Salzburg, approx. 50 km
Day 7	Salzburg – Burghausen, approx. 60 km
Day 8	Burghausen – Schärding, approx. 70 km
Day 9	Schärding – Schlägen / Donauschlinge, approx. 55 km
Day 10	Schlägen – Enns region, approx. 70 km
Day 11	Enns – Marbach / Maria Taferl, approx. 65 km
Day 12	Marbach – Vienna, approx. 55 km + train ride
Day 13	Individual departure

Travel time

Season A	27.04. – 10.05.	28.09. – 05.10.
Season B	11.05. – 24.05.	07.09. – 27.09.
Season C	25.05. – 06.09.	

Arrival Saturday 27.04. – 05.10.2024
The season is dictated by the arrival date.

Services

- 12 nights with breakfast, national 3* / 4*-level
- Train ride Krems – Vienna incl. bike
- Bus transfer Zell am Ziller – Krimml incl. bike
- Luggage transport from hotel to hotel to Vienna, max. 20 kg / piece
- Cycle route description with maps (1 x per room)
- Service-Hotline (7 days, 08.00 a.m. – 08.00 p.m.)

Not included services

- Ferry ride Schlägener Schlinge, approx. 5 euros per person
- City or visitors tax, if payable

Basic price per person

Doubleroom, Season A	1599,-
Doubleroom, Season B	1699,-
Doubleroom, Season C	1799,-
Price Surcharge Singleroom	519,-

Additional night prices per person

Innsbruck DBL / BB	85,-
Innsbruck SGL / BB	135,-
Vienna DBL / BB	89,-
Vienna SGL / BB	139,-

Additional services per person

E-bike / Pedelec*	279,-
Rental bike (21-speed)*	109,-

*including rental bike insurance

Exemplary hotel list

Innsbruck	Austria Trend Congress Innsbruck	http://www.austria-trend.at/de/hotels/congress-innsbruck
Strass / Zillertal	Cafe Zillertal	https://www.cafe-zillertal.at/homepage.html
Krimml	Nationalparkhotel Klockerhaus Krimml	http://www.klockerhaus.com/
Kaprun / Zell am See	Hotel Martini Kaprun	http://www.hotel-martini.at/
Lofer	Gasthof Bad Hochmoos Lofer	http://www.hochmoos.at/en-index
Salzburg	Hotel Goldenes Theater, Salzburg	http://www.goldenestheaterhotelsalzburg.com/index_de.htm
Burghausen	Glöcklhofer Burghausen	https://www.hotel-gloecklhofer.de/
Schärding	Stadthotel, Schärding	https://stadthotel-schaerding.at/
Schlögen / Donauschlinge	Donauschlinge Riverresort, Schlögen	http://www.donauschlinge.at
Enns	Zum goldenen Schiff Enns	https://www.hotel-brunner.at/
Marbach / Maria Taferl	Hotel Rose, Maria Taferl	https://hotelrose.co.at/
Wien	Arcotel Kaiserwasser Wien	http://www.arcotelhotels.com/de/kaiserwasser_hotel_wien/

Child reduction on basic price

0 - 5 Years	100%
6 - 11 Years	50%
12 - 14 Years	25%
15 - 17 Years	10%

Due to the more demanding stages, we recommend this trip only for young people with good stamina. Reduction for children is valid for accommodation in room with two full-paying guests.

Languages Travel documents

→ German, English, French

Additional note

- All bookings are on request.
- Return journey to Innsbruck: on your own by train incl. bike from Vienna: connections hourly, without changing trains, duration approx. 4.5 hours.
- Twin / double rooms / separate beds are only occasionally available. We treat requests as non-binding customer requests, if above mentioned room types are a booking condition, it must be mentioned as a condition at the time of booking.

Equipment of our rental bikes

- Bike lock
- Odometer
- Handlebar bag
- Air pump
- Breakdown kit (1 x per booking)
- Unflat Schwalbe Marathon Plus tyres or comparable
- Waterproof pannier

Journey to Innsbruck

- Nearest airports: Innsbruck, Munich
- Train station: Innsbruck

Parking in Innsbruck

- Public garage, approx. 17 € / day, payable on site.
- No reservation possible through Radweg-Reisen.

Luggage transport

- Luggage pick-up from 09.00 a.m., delivery to the next hotel by 06.00 p.m. at the latest, labeling of luggage is 1 x for the whole tour. No restriction on the number of pieces of luggage, but max. 20 kg per piece of luggage.

Travel documents

- Travel document dispatch to the arrival hotel, hotel list and arrival information in advance by e-mail

Stages description

Day 1: Individual arrival in Innsbruck

Pfiat di in Austria! Grab your bike and explore Innsbruck, famous for the Golden Roof. Located near the Inn River, bike through Innsbruck's Old Town, which is characterized by town houses and densely built narrow streets. Stroll through Innsbruck's Hofgarten, a listed park on the edge of the old town.

Day 2: Innsbruck – Strass / Zillertal, approx. 50 km

On the first stage of your cycling vacation in Austria, you will follow the Inn Cycle Path. You can take a break in the small town of Hall. Visit the historic old town and the landmark, the Münzerturm. It is part of Hasegg Castle, which houses a coin museum. Cycle at a leisurely pace to the next highlight of the tour. Visit the Swarovski Crystal Worlds in Wattens. In chambers of wonder, you will experience the fascination

that comes from crystals. In the park there is a crystal cloud made of 800,000 crystals - impressive! Your destination for the day, Strass, is located at the entrance to the Zillertal.

Day 3: Strass – Krimml, approx. 25 – 45 km + transfer

Surrounded by mountain peaks, the bike path leads you through the Zillertal. You will reach the village of Zell am Ziller in a relaxed manner. In the early afternoon, a transfer takes you over the Gerlos Pass to Krimml. During the ride you can take a look at the Krimml Waterfalls. After arriving at your hotel, take a hike to Austria's highest waterfalls. Lookouts offer you breathtaking views of the thundering masses of water.

Day 4: Krimml – Kaprun / Zell am See, approx. 60 km

Get on your bike right after breakfast. You will cycle leisurely along the Salzach River through the Hohe Tauern National Park. Lush green meadows and small idyllic villages alternate and offer a fairy-tale backdrop with the snow-capped three-thousand-meter peaks in the background. Once in Kaprun, you will visit the castle, the town's landmark, which sits majestically on a hill. Are you still in the mood for a hike? Then go on a voyage of discovery through the Sigmund Thun Gorge (not included).

Day 5: Zell am See – Lofer, approx. 50 km

On today's stage you will cycle through several highlights. Before you start, however, you will first take a refreshing dip in Lake Zell. After a few kilometers you will reach the famous pilgrimage church of Maria Alm. Saalfelden is suitable for your lunch break. Enjoy spicy cheese and sausage from the region to continue cycling invigorated. Explore the Lamprechtshöhle cave near Weißbach on a guided tour (not included) - it is considered one of the longest passage caves in the world.

Day 6: Lofer – Salzburg, approx. 50 km

Today the course of the previously calm river changes. In Unken, the river breaks through the Stone Lake or Steinerne Meer as it is known locally. You continue to reach the spa town of Bad Reichenhall. The river forms a natural border here between Germany and Austria. Cycling through the riverside meadows of the Saalach, you reach the Festival City of Salzburg. Follow the traces of Wolfgang Amadeus Mozart or enjoy the Hohensalzburg castle.

Day 7: Salzburg – Burghausen, approx. 60 km

The Alps are behind you, the diverse Alpine foothills in front of you. You cycle through extensive floodplain forests and the colorful untouched nature of the Lower Inn European Reserve. Numerous species of plants and birds have settled here. Even from a distance you will recognize the seemingly endless battlements and towers of the longest castle complex in the world. Once you arrive in Burghausen, you will first visit the castle and then indulge in the culinary delights of the region in a rustic vaulted cellar.

Day 8: Burghausen – Schärding, approx. 70 km

Today, on your cycling vacation in Austria, you are mostly on the Inn cycle path. From Braunau, the path runs on both sides of the river. In Reichersberg you can make a stop at the monastery. A guided tour of the monastery will give you an insight into the still active life of the Augustinian Canons and the past of the over 900-year-old complex. You will cycle through the Lower Inn European Reserve, which is rich in birds and plants, to Schärding, the baroque town on the Inn River. The townscape represents the Inn-Salzach style, characterized by colorful baroque town houses.

Day 9: Schärding – Schlögen / Donauschlinge, approx. 55 km

Today the first stage of your bike tour lies ahead of you. You will first cycle to Oberzell, where you can visit the castle. In addition to the ceramics museum, the magnificent knights hall is well worth seeing. Only a little later you will reach Engelhartzell. The Trappist monastery houses its own brewery, which produces beers along the lines of the Belgian Trappist breweries. You have almost reached your stage destination with the Schlögener Schlinge. Here the Danube makes a 180-degree bend - very impressive. In Au you take a ferry ride (not included) to Schlögen on the opposite side.

Day 10: Schlögen – Enns region, approx. 70 km

The cycle path to Linz in Upper Austria takes you through the vegetable growing region of Eferdinger Becken. Leave the market communities of Aschach, Ottensheim and Wilhering behind you and then have enough time for lunch in Linz. Find a comfortable seat in any of the many pubs in the historic old quarter or visit the pilgrimage basilica in Pöstlingberg. Finally, cycle to Enns.

Day 11: Enns – Marbach / Maria Taferl, approx. 65 km

Today you will follow the Danube to Grein. The charming baroque town's historic theatre is Austria's oldest active theatre. Castle Greinburg, which is located directly on the riverbank, houses the Austrian maritime museum. The staterooms, the arcade court and the chapel are also worth seeing. You will then leave Upper Austria behind you and cycle to Marbach and the wine district.

Day 12: Marbach – Vienna, approx. 55 km + train ride

On your last stage, you will cycle almost without any inclines toward Melk Abbey, which can already be seen from afar. The Benedictine abbey towers high above the town of Melk and looks back on more than 900 years of history. Leaving Melk behind, you will now get to know the landscape of the Wachau. It is known for medieval castle ruins, historic village centers, wines and apricot jam. From Krems you will take the train to Vienna. At the end of your cycling vacation in Austria, treat yourself to a large slice of Sacher cake in one of the quaint coffee houses.

Day 13: Individual departure

After breakfast you start your individual return journey home or extend your stay.